



Abbey 1000

This weekend there is a number of events to celebrate the 1000 years since the start of the building of the Abbey here in Bury St Edmunds. Bishop Alan will celebrate Mass for us in Bury St Edmund's Cathedral at 09.15, to which we are all invited, during which Bishop Martin Seely (the Anglican Bishop of Ipswich and St Edmundsbury) will preach; and then Bishop Alan will preach at the 11.15 Anglican Eucharist. Do encourage family and friends to come along to Mass on this very special weekend. For more information about the whole weekend go to: stedscathedral.org/abbey-1000-events.

Pastoral Focus

This term we are monitoring punctuality to AM registration and appreciate your support in encouraging your child to arrive to school promptly before 8:55am.

Registration is an important part of our day as this is when important notices are delivered to students, we have a focus for learning for each day (i.e. literacy) and is a chance for your child to catch up with their form and form tutor.

Mrs Cornforth

Exams

We would like to take this opportunity to wish our year 11 and 13 students the very best of luck with their exams. The exams start on Monday and will run until the end of June. .

LRC

LRC will be closed for general use during the exam time (before and during school). Students who attend breakfast club need to go to F1. Please request and return books before school in F1 as well.

New Fiction

Where the World Turns Wild- Nicola Penfold

Wink- Rob Harrell

Malamander- Thomas Taylor

Who will be leading the AR reader board challenge next week? Students with the most quizzes accomplished with word count will be posted next week! Top 10 readers for May will receive a prize! Stay Tuned!

Mr Walker

Astronomy News

Total Eclipse of The Moon 16th MAY

Every month's full Moon has a traditional name given to it, usually from older cultures, especially the native tribes of North America as well as pagan peoples of Europe. As May is the traditional "spring" month that preludes the summer, this month's full Moon is called the Flower Moon. However, this month it also becomes the Blood Flower Moon!

This is because there will be a total eclipse of the Moon. These occur when the Sun, Earth and Moon are aligned in such a way that from certain points on Earth the Moon will be seen to pass through the Earth's shadow. Not everyone will be able to see it, but we shall here in Bury St Edmunds. A total eclipse of the Moon is called a "Blood" Moon because it will appear to glow with a ghostly red hue. This is because of the sunlight being refracted by the Earth's atmosphere in such a way that the longer, "red" wavelengths pass through to illuminate the full Moon. The other wavelengths, especially at the violet-blue end of the spectrum, are scattered away. How "red" the Moon becomes will depend on atmospheric conditions at the time, especially the amount of dust. This also explains why we occasionally see "red" sunsets and sunrises.

The full Moon will rise on the evening of Sunday 15th May, but the eclipse (as seen from Bury St Edmunds) will not begin until the early hours of the morning of Monday 16th. The Moon will begin to move into what is known as the "partial" phase at just before 3.30am and, conditions permitting, will start to appear red. The true "total" phase begins an hour later, just before 4.30am, when the Moon will appear at its darkest hue. The "maximum total" will occur at 4.59am which, coincidentally, is the time for sunrise so the sky will be becoming light. This will not affect the visibility of the eclipse – the main issue will be the fact that the Moon will be setting very low in the west, so you need to have a flat, clear horizon in that direction.

All we need now is a perfectly clear sky!

Mr Gregory

Challah Bread



Thomas and Viktoria two of our year 9 stud in 9A made Challah bread as part of their learning in the Judaism topic for RE. Challah bread is eaten by Jews on Shabbat on Friday evenings and is a traditional part of the ceremony. The students enjoyed tasting this sweet bread in their RE lesson!

Mr Livermore

Sporting Highlights

Step into Sport Day 2022

On Friday 6th May a small group of students took part in the Step into Sports event held at County Upper School. The day was led by the British Olympian rower Toby Garbett who started the day by giving an inspirational talk about his learning experience at school and journey into sports.

In the morning the students participated in Inclusive team sports games, Goal ball and Volleyball and in the afternoon they used their leadership and communication skills to design and lead their own sports games to teach to each other. A wonderful experience for all the students who took part and as ever they represented the school fantastically.



Mrs Cooper

ESAA Athletics Competition

On Tuesday 10th March, students from Year 7 to Year 10 took part in the ESAA Athletics competition. It was a fantastic day with some outstanding performances. To highlight a few: Molly Murphy winning 100m, Nathan Russell winning 200m and Eva Torfinn placing 2nd in the 800m. Many students competed a year up, and still managed to come top 4 in their events! Additionally, all relay teams performed excellently! The Junior and Inter Girls Relay teams won their races, and Junior Boys and Inter Boys came 2nd and 3rd. Well done to all for representing the school proudly!



Junior Girls Relay



Junior Boys Relay



Inter Girls Relay



Inter Boys Relay

Artists inspired by the Sainsbury Centre, Norwich



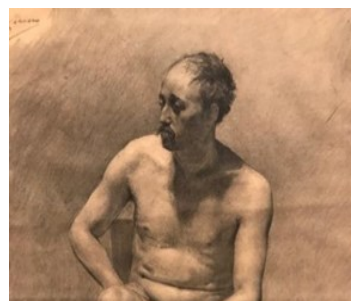
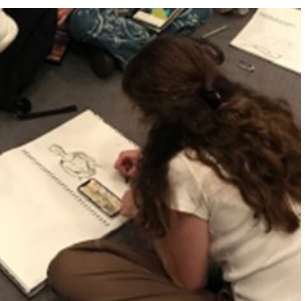
Art A-level and GCSE students had a fantastic day at the Sainsbury Centre of Visual arts today to help them gather ideas and visual research for their personal portfolios.

We explored the array of amazing artefacts in the permanent collection in the morning, followed by lunch amidst some of the sculptures in the beautiful setting of a bluebell filled woodland that is featured as part of UEA campus.

After lunch we had the fantastic opportunity to see the 'Picasso - The Legacy of Youth' Exhibition which enabled students to gain a deeper understanding of key works and artists that inspired Picasso – from African Masks to paintings by other artists such as Monet, Modigliani and Monet. We were all inspired by the skills that Picasso demonstrated in his work – his early drawings at the age of 15 were truly captivating to see! The students were a fantastic group to take to the gallery and everyone made ample drawings and studies during the day.

Thank you to all involved for working in such a mature and investigative manner.

Ms Chacksfield



Important – Car Parks

Once again can we please ask that parents do not park in either the front or rear car parks at the beginning and end of the day. This causes a major health and safety issue for our students and staff. We respectfully ask for your cooperation in this matter.

Save the Date

A Level Art Exhibition Thursday 23rd June from 6 -7pm.

Water Bottles

As the weather is starting to get warmer can you ensure your child has a water bottle, we do not have any disposable cups in school. We do sell St Benedict's water bottles in resources if you would like to purchase one £1.50.

